

050917

RECEIVED  
LARAMIE COUNTY  
CHEYENNE, WY.

CERTIFIED LAND CORNER RECORDATION

DESCRIPTION OF CORNER EVIDENCE FOUND, AND ORIGINAL RECORD (If known)

Found no evidence of previous monumentation.

1/4 S.11  
S.14  
T.14N., R.63W.  
6th P.M.

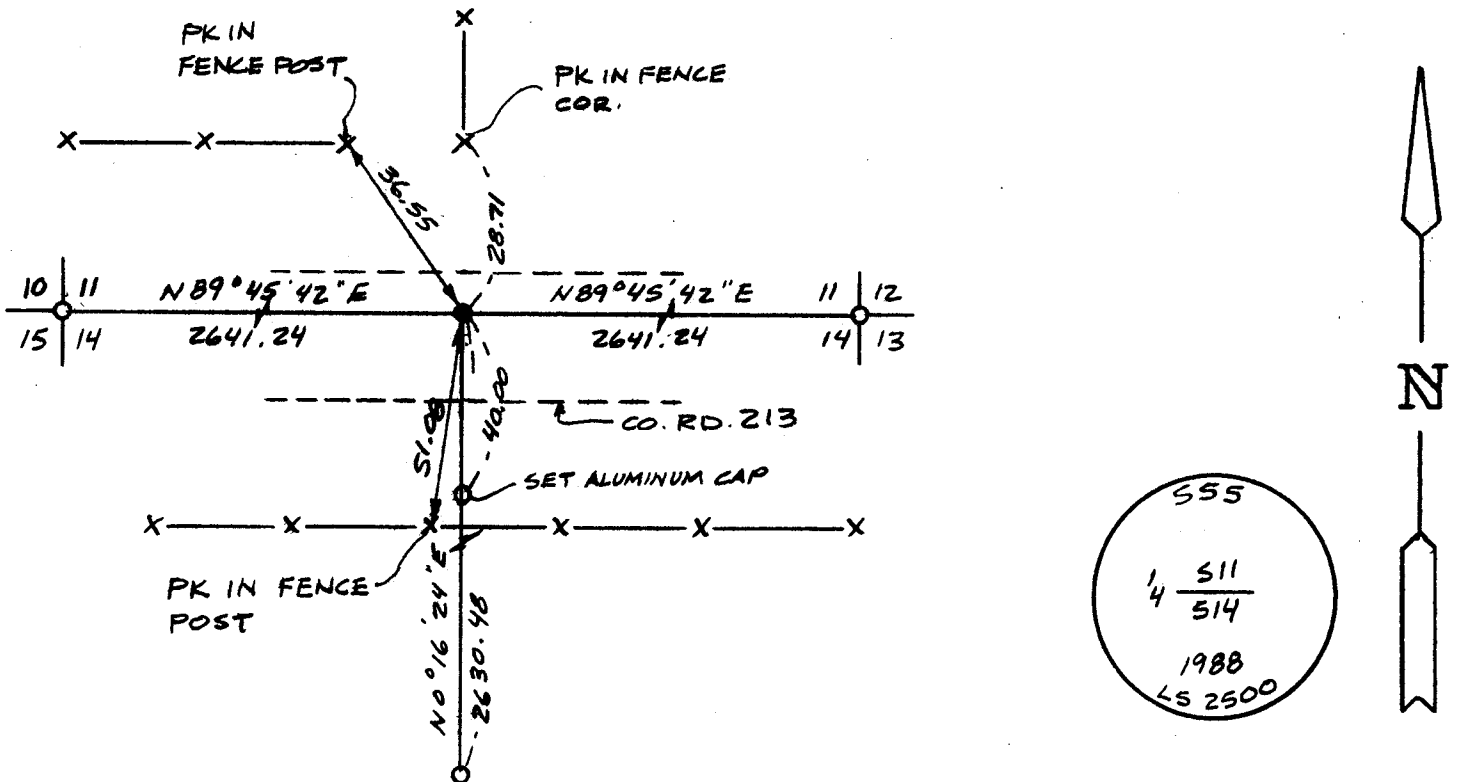
G.L.O. Record: Granite stone 14" x 8" x 5" set by Edwin James & Alfred M. Rogers, Deputy Surveyors, June 16, 1871.

DESCRIPTION OF MONUMENT AND ACCESSORIES ESTABLISHED TO PERPETUATE THE ORIGINAL LOCATION OF THIS CORNER:

At the corner: Set 5/8" x 18" rebar with 2" Aluminum Cap from tie to Conway Hills Subdivision Which is at mid point between the SE & SE corner of Sec. 11. Corner falls 6' North of centerline County Road on fence line North.

Accessories : See ties below.

SKETCH, WITH COURSE AND DISTANCE TO ADJACENT CORNER IF DETERMINED IN THIS SURVEY. (May Sketch or Paste Reproduction on Reverse Side.)



I, John A. Steil certify that I have carefully performed or reviewed the work done on the diagrammed corner as reported on this recordation form and approve the same.

*John A. Steil*  
Signature of Surveyor

L.S. 2500  
Registration No.

STATE OF WYOMING,  
Office of Clerk and Recorder,  
County of \_\_\_\_\_

This "corner record" was filed for record on the \_\_\_\_\_ day of \_\_\_\_\_, 19\_\_\_\_, was noted on the cross-index plat and is assigned page No. \_\_\_\_\_, in book No. \_\_\_\_\_.

County Official			
Cross Index No.	<u>J-19</u>	T. <u>14N</u>	R. <u>63W</u> Mer. <u>6th</u>
		T. _____	R. _____ Mer. _____
		T. _____	R. _____ Mer. _____
		T. _____	R. _____ Mer. _____
		T. _____	R. _____ Mer. _____
		T. _____	R. _____ Mer. _____
		T. _____	R. _____ Mer. _____